



Bombas Acero Inoxidable AISI 304 - Rodete Noryl Stainless Steel Pumps AISI 304 - Noryl Impeller

50Hz

6RX

BOMBA 6RX

Caudales hasta 66 m³/h a 2850rpm

Altura manométrica hasta 505m a 2850rpm

Impulsiones de 2" ½ y 3"

Ensayos de acuerdo con norma ISO 9906

MOTORES SUMERGIBLES EMC

Motores Sumergibles Encapsulados EMC de 4" hasta 10 CV

Motores Sumergibles Rebobinables EMC de 6" hasta 50 CV

Tensión Monof. hasta 3CV 220/230V - 50Hz - Tolerancia ±10%

Tensión Trifásica 230-400/690V - 50Hz - Tolerancia ±10%

Protección IP 68 - Clase de Aislamiento Tipo F

Temp. máx. del agua 30°C (Opcional temp. máx. 70°C)

Instalación en Vertical y en Horizontal

Arranque máximos por hora 20

Velocidad mínima de refrigeración hasta 25 CV: 0.2 m/s

Velocidad mínima de refrigeración 30-50 CV: 0.5 m/s

Acoplamiento NEMA

CARACTERÍSTICAS

Bomba sumergible centrífuga multicelular con turbinas radiales

Turbinas en Noryl con elementos antidesgaste en inox AISI 304

Difusores en Noryl con elementos antidesgaste en inox AISI 304

Exterior de la bomba en acero inoxidable AISI 304

Cuerpo impulsión con válvula incorporada

Cuerpo impulsión en acero inoxidable AISI 304

Cuerpo de aspiración, rejilla y tirantes en inoxidable AISI 304

Protección del cable en acero inoxidable AISI 304

Eje de bomba en acero inoxidable AISI 316

Acoplamiento norma NEMA

APLICACIONES

Bombas para aplicación en abastecimientos de agua, riego, sistemas de presión

6RX PUMP

• Capacity up to 66m³/h for 2850rpm

• Head up to 505m for 2850rpm

• Outlet 2" ½ and 3"

• Test according ISO 9906

EMC SUBMERSIBLE MOTORS

• 4" Encapsulated Submersible Motors EMC up to 10 CV

• 6" Rewindable Submersible Motors EMC up to 50 CV

• Single-phase Voltage up to 3 CV 220/230V - 50Hz - ±10% Tolerance

• Triphase Voltage 230-400/690V - 50Hz - ±10% Tolerance

• IP 68 - Isolation F type

• Water Maximum Temperature 30°C (Optional 70°C)

• The motor can operate vertically and horizontally

• Maximum start/hour 20

• Minimum cooling water speed up to 25 CV: 0.2 m/s

• Minimum cooling water speed up to 30-50 CV: 0.5 m/s

• NEMA coupling

CHARACTERISTICS

• Submersible centrifugal pump with radial impellers

• Noryl impellers with rotation parts in AISI 304

• Noryl diffusers with rotation parts in AISI 304

• Pump outside in Stainless Steel AISI 304

• Discharge Case with valve-check

• Discharge Case in Stainless Steel AISI 304

• Suction Case and Filter in AISI 304

• Cable guard in AISI 304

• Shaft Pumps in Stainless Steel AISI 316

• NEMA coupling

APPLICATIONS

• Domestic water supply, irrigation, spraying watering, sprinkling and pressurization systems

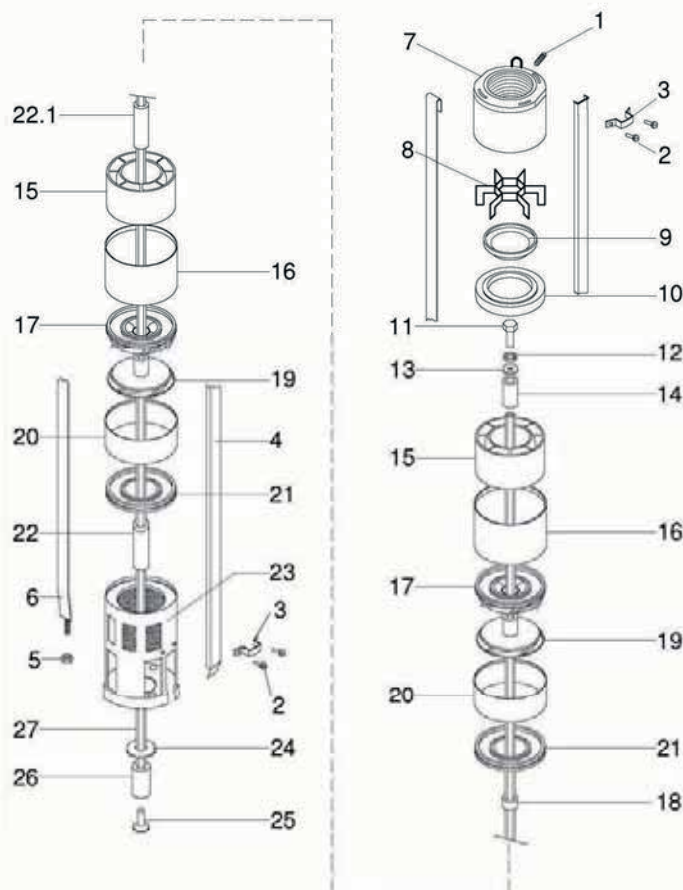
50Hz

Bombas Acero Inoxidable AISI 304 - Rodete Noryl

Stainless Steel Pumps AISI 304 - Noryl Impeller

6RX

DESPIECE • CUTTING



| Nº | DESCRIPCIÓN DESCRIPTION | MATERIAL MATERIAL |
|----|---|---|
| 1 | Pasador Rosca Set screw | Acero Inoxidable AISI 304 Stainless Steel AISI 304 |
| 2 | Tornillo DIN-84 A2 M-6x12 Screw DIN-84 A2 M-6x12 | Acero Inoxidable AISI 304 Stainless Steel AISI 304 |
| 3 | Abrazadera Brace | Acero Inoxidable AISI 304 Stainless Steel AISI 304 |
| 4 | Protección cable Cable guard | Acero Inoxidable AISI 304 Stainless Steel AISI 304 |
| 5 | Tuerca Tirante DIN 934 M-12 Nut DIN 934 M-12 | Acero Inoxidable AISI 304 Stainless Steel AISI 304 |
| 6 | Tirante Tie-rod | Acero Inoxidable AISI 304 Stainless Steel AISI 304 |
| 7 | Cuerpo Impulsión Discharge Case | Acero Inoxidable AISI 304 Stainless Steel AISI 304 |
| 8 | Guía de válvula Valve guide | Acero Inoxidable AISI 304 Stainless Steel AISI 304 |
| 9 | Válvula de retención Valve | Acero Inoxidable AISI 304 Stainless Steel AISI 304 |
| 10 | Asiento de Válvula Valve Bracket | Acero Inoxidable AISI 304 Stainless Steel AISI 304 |
| 11 | Tornillo DIN 933 M-8 x 20 Shaft and Screw DIN 933 M-8 x 20 | Acero Inoxidable AISI 304 Stainless Steel AISI 304 |
| 12 | Arandela DIN 127 A2 M-8 Shaft end pressure washer DIN 127 A2 M-8 | Acero Inoxidable AISI 304 Stainless Steel AISI 304 |
| 13 | Arandela plana Washer | Acero Inoxidable AISI 304 Stainless Steel AISI 304 |
| 14 | Casquillo superior Spacer bush | Acero Inoxidable AISI 304 Stainless Steel AISI 304 |

| Nº | DESCRIPCIÓN DESCRIPTION | MATERIAL MATERIAL |
|-----------|--|---|
| 15 | Guía cojinete superior Bushing Bracket | Noryl Noryl |
| 16 | Camisa Soporte Superior - Intermedio Cover | Acero Inoxidable AISI 304 Stainless Steel AISI 304 |
| 17 | Difusor Diffuser | Noryl Noryl |
| 18 | Casquillo Intermedio (6RX27 a 6RX66) Diffuser spacer bush (6RX 27 to 6RX66) | Acero Inoxidable AISI 304 Stainless Steel AISI 304 |
| 19 | Impulsor Impeller | Noryl Noryl |
| 20 | Camisa del difusor Cover Diffuser | Acero Inoxidable AISI 304 Stainless Steel AISI 304 |
| 21 | Tapa difusor Diffuser | Noryl Noryl |
| 22 - 22.1 | Distanciador Spacer Bush | Noryl Noryl |
| 23 | Cuerpo aspiración Suction Case | Acero Inoxidable AISI 304 Stainless Steel AISI 304 |
| 24 | Anillo contra-empuje Adjustable washer | Celerom Celerom |
| 25 | Tornillo DIN 7991 Coupling attachment screw DIN 7991 | Acero Inoxidable AISI 304 Stainless Steel AISI 304 |
| 26 | Manguito de acoplamiento Coupling | Acero Inoxidable AISI 304 Stainless Steel AISI 304 |
| 27 | Eje Bomba Pump Shaft | Acero Inoxidable AISI 316 Stainless Steel AISI 316 |

Debido a continuas mejoras en los diseños, EMC BOMBAS se reserva el derecho de realizar modificaciones sin previo aviso.
Due to continuous improvement in design EMC BOMBAS reserves the right to amend specifications or data without prior notice.

6RX 66

Características 50Hz • Performance 50Hz

| Bomba Pump | Motor | | Q | Caudal • Capacity | | | | | | | | | | | |
|---------------|-------|------|------------------------|-------------------|------|------|------|------|------|------|------|------|------|------|------|
| | | | l/s | 0 | 4,2 | 5,0 | 5,8 | 7,5 | 9,2 | 10,0 | 11,7 | 12,5 | 13,3 | 15,0 | 18,3 |
| | kW | HP | m ³ /h | 0 | 15,0 | 18,0 | 21,0 | 27,0 | 33,0 | 36,0 | 42,0 | 45,0 | 48,0 | 54,0 | 66,0 |
| | | | l/min | 0 | 250 | 300 | 350 | 450 | 550 | 600 | 700 | 750 | 800 | 900 | 1100 |
| 6RX-66/03 | 4 | 5,5 | Altura • Head H (m) | 35 | 33 | 32 | 31 | 29 | 26 | 24 | 22 | 20 | 18 | 15 | 5 |
| 6RX-66/04 | 5,5 | 7,5 | | 47 | 45 | 43 | 41 | 38 | 34 | 32 | 28 | 26 | 24 | 20 | 7 |
| 6RX-66/05 | 7,5 | 10 | | 58 | 55 | 53 | 51 | 48 | 43 | 41 | 36 | 33 | 30 | 24 | 9 |
| 6RX-66/06 | 9,3 | 12,5 | | 70 | 67 | 64 | 62 | 57 | 51 | 48 | 43 | 40 | 36 | 29 | 10 |
| 6RX-66/07 | 11 | 15 | | 81 | 77 | 74 | 71 | 67 | 60 | 56 | 50 | 46 | 42 | 34 | 12 |
| 6RX-66/09 | 13 | 17,5 | | 105 | 97 | 94 | 91 | 86 | 77 | 73 | 64 | 59 | 53 | 44 | 15 |
| 6RX-66/10 | 15 | 20 | | 116 | 109 | 105 | 101 | 95 | 85 | 81 | 71 | 66 | 59 | 49 | 17 |
| 6RX-66/12 | 18,5 | 25 | | 140 | 129 | 125 | 122 | 114 | 102 | 95 | 85 | 79 | 72 | 59 | 20 |
| 6RX-66/15 | 22 | 30 | | 175 | 159 | 155 | 152 | 142 | 128 | 121 | 106 | 98 | 90 | 73 | 26 |
| 6RX-66/17 | 26 | 35 | | 198 | 183 | 178 | 173 | 162 | 146 | 137 | 120 | 112 | 102 | 83 | 29 |
| 6RX-66/20 | 30 | 40 | | 233 | 211 | 207 | 202 | 189 | 171 | 161 | 142 | 132 | 121 | 98 | 34 |
| 6RX-66/25 | 37 | 50 | | 291 | 267 | 262 | 255 | 238 | 214 | 202 | 177 | 165 | 151 | 122 | 43 |
| 6RX-66/30 | 45 | 60 | | 349 | 320 | 313 | 306 | 285 | 256 | 247 | 213 | 190 | 181 | 146 | 51 |

Información Técnica Motor Sumergible • Technical Information Sumersible

| Bomba Pump | Potencia Power | | Tipo Motor Motor Type | U _N | Información Motor • Motor information | | | | | | | | | | | |
|---------------|-------------------|------|--------------------------|----------------|---------------------------------------|----------------|----------------|------|------|------|-------|------|------|-----|-------|------|
| | | | | | n | I _N | I _A | η | | | cos φ | | | Ax. | P | L |
| | min ⁻¹ | (A) | 50 | | 75 | 100 | 50 | 75 | 100 | kN | (kg) | (mm) | | | | |
| 6RX-66/03 | 4 | 5,5 | EMC/6 5,5 | 400 V | 2855 | 9,9 | 37,9 | 0,68 | 0,72 | 0,72 | 0,59 | 0,67 | 0,81 | 20 | 44,0 | 649 |
| 6RX-66/04 | 5,5 | 7,5 | EMC/6 7,5 | | 2857 | 13,3 | 51,3 | 0,71 | 0,74 | 0,76 | 0,59 | 0,67 | 0,81 | | 47,0 | 678 |
| 6RX-66/05 | 7,5 | 10 | EMC/6 10 | | 2860 | 16,7 | 64,5 | 0,79 | 0,80 | 0,80 | 0,59 | 0,67 | 0,81 | | 53,0 | 758 |
| 6RX-66/06 | 9,3 | 12,5 | EMC/6 12,5 | | 2865 | 20,5 | 79,2 | 0,80 | 0,81 | 0,81 | 0,59 | 0,67 | 0,81 | | 57,0 | 800 |
| 6RX-66/07 | 11 | 15 | EMC/6 15 | | 2855 | 23,6 | 91,1 | 0,82 | 0,83 | 0,83 | 0,63 | 0,71 | 0,81 | | 61,0 | 851 |
| 6RX-66/09 | 13 | 17,5 | EMC/6 17,5 | | 2875 | 27,9 | 107 | 0,81 | 0,82 | 0,82 | 0,61 | 0,69 | 0,82 | | 66,0 | 911 |
| 6RX-66/10 | 15 | 20 | EMC/6 20 | | 2880 | 32,2 | 120 | 0,80 | 0,81 | 0,81 | 0,61 | 0,69 | 0,83 | | 72,0 | 973 |
| 6RX-66/12 | 18,5 | 25 | EMC/6 25 | | 2868 | 40,2 | 155 | 0,81 | 0,82 | 0,82 | 0,57 | 0,66 | 0,81 | | 80,0 | 1006 |
| 6RX-66/15 | 22 | 30 | EMC/6 30 | | 2875 | 46,7 | 180 | 0,82 | 0,83 | 0,83 | 0,59 | 0,67 | 0,82 | | 86,0 | 1106 |
| 6RX-66/17 | 26 | 35 | EMC/6 35 | | 2885 | 54,9 | 212 | 0,83 | 0,84 | 0,84 | 0,61 | 0,69 | 0,83 | | 90,0 | 1217 |
| 6RX-66/20 | 30 | 40 | EMC/6 40 | | 2895 | 62,1 | 240 | 0,83 | 0,84 | 0,84 | 0,61 | 0,69 | 0,83 | 27 | 104,0 | 1247 |
| 6RX-66/25 | 37 | 50 | EMC/6 50 | | 2905 | 78,5 | 303 | 0,81 | 0,82 | 0,84 | 0,61 | 0,69 | 0,83 | | 111,0 | 1347 |
| 6RX-66/30 | 45 | 60 | EMC/7 60 | | 2890 | 88,0 | 446 | 0,84 | 0,86 | 0,86 | 0,75 | 0,83 | 0,86 | 45 | 142,0 | 1139 |

Más información en fichas técnicas motores sumergibles EMC • More information in technicals specifications of sumersible motors EMC

Características de Fabricación • Manufacturing Characteristics

Cuerpo • Body

Rodete • Impeller

Eje Bomba • Pump shaft

Acople • Coupling

Rejilla • Strainer

Válvula • Valve cap

Diám. Impulsión • Outlet con. diam.

Max. conten. arena • Max. sand content

Acero Inoxidable (AISI 304L) • Stainless steel (AISI 304L)

Noryl • Noryl

Acero Inoxidable AISI 316 • Stainless Steel AISI 316

Acero Inoxidable AISI 316 • Stainless Steel AISI 316

Acero Inoxidable AISI 304L • Stainless Steel AISI 304L

Acero Inoxidable AISI 304L • Stainless Steel AISI 304L

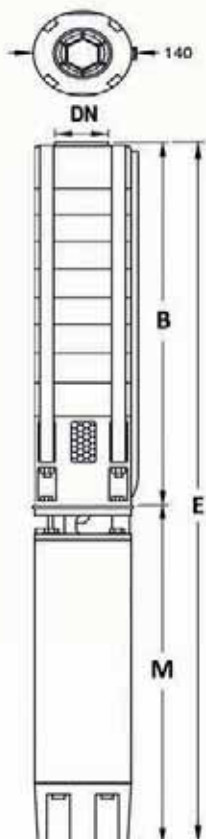
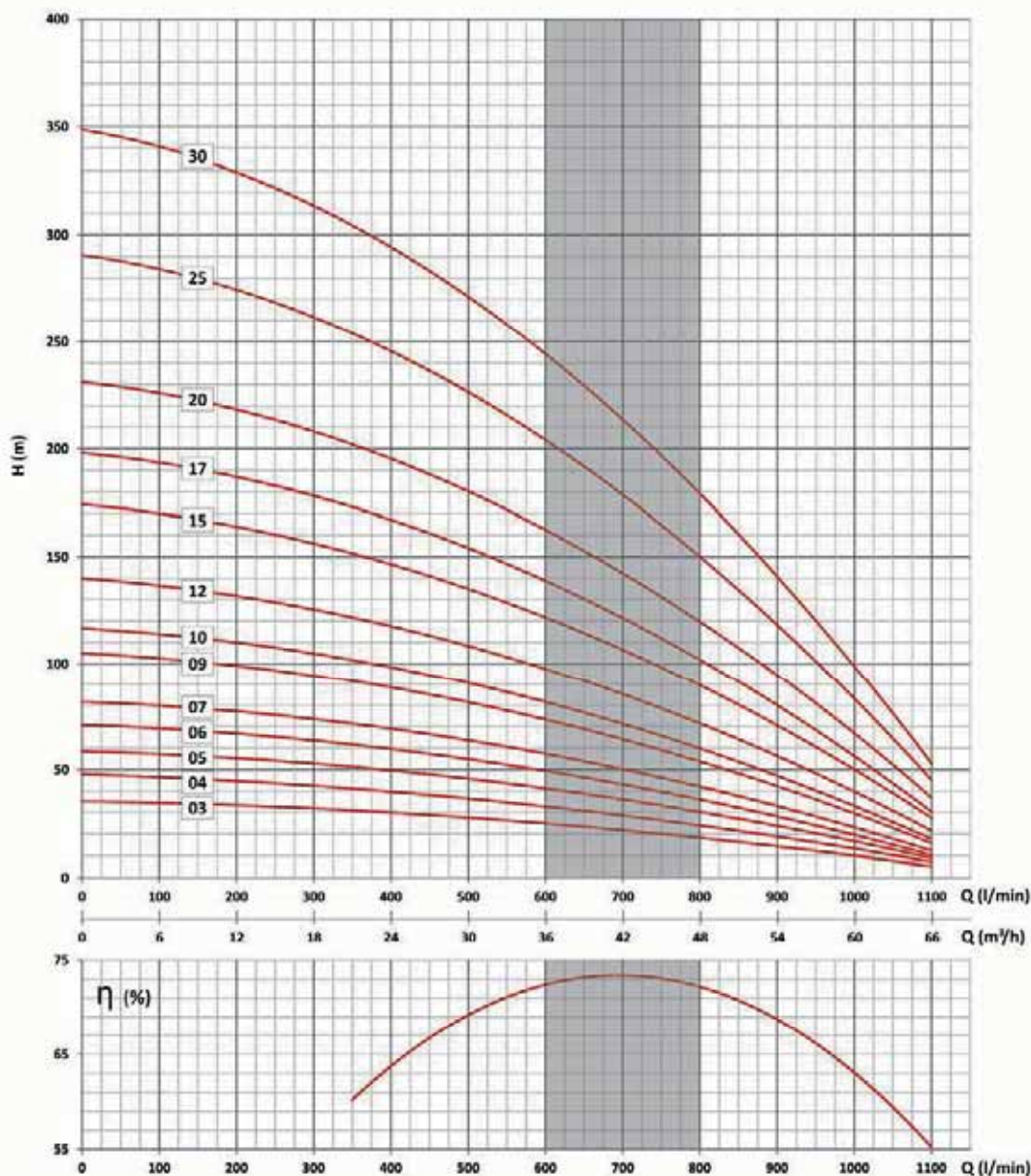
3" (rosca interior) • 3" (inside threaded)

50 gr/m³ • 50 gr/m³

50Hz

Bombas Acero Inoxidable AISI 304 - Rodete Noryl
Stainless Steel Pumps AISI 304 - Noryl Impeller

6RX 66

Características 50Hz • Performance 50Hz

Dimensiones y Pesos
Dimensions and Weights

| Dimensiones y peso de la bomba • Pump weight and dimensions | | | | | | | |
|---|------|------|------|------|-------|----|---------------------------|
| Tipo Type | E | B | M | ØMax | ØMot. | DN | Peso Bomba Pump Weight |
| 6RX-66/03 | 1209 | 560 | 649 | 146 | 144 | 3" | 9,3 |
| 6RX-66/04 | 1306 | 628 | 678 | | | | 10,5 |
| 6RX-66/05 | 1454 | 696 | 758 | | | | 11,7 |
| 6RX-66/06 | 1564 | 764 | 800 | | | | 12,9 |
| 6RX-66/07 | 1683 | 832 | 851 | | | | 14,0 |
| 6RX-66/09 | 1879 | 968 | 911 | | | | 16,4 |
| 6RX-66/10 | 2009 | 1036 | 973 | | | | 17,5 |
| 6RX-66/12 | 2178 | 1172 | 1006 | | | | 19,9 |
| 6RX-66/15 | 2482 | 1376 | 1106 | | | | 23,4 |
| 6RX-66/17 | 2729 | 1512 | 1217 | | | | 25,7 |
| 6RX-66/20 | 2963 | 1716 | 1247 | | | | 29,3 |
| 6RX-66/25 | 3403 | 2056 | 1347 | | | | 35,1 |
| 6RX-66/30 | 3535 | 2396 | 1139 | 41,0 | | | |

Debido a continuas mejoras en los diseños, EMC BOMBAS se reserva el derecho de realizar modificaciones sin previo aviso.
 Due to continuous improvement in design EMC BOMBAS reserves the right to amend specifications or data without prior notice.

Las condiciones de trabajo han sido tomadas en las siguientes condiciones: agua 15°C, presión atmosférica de 1 bar y densidad específica 1gr/cm³ según ISO 9906 Annex A.
 The hydraulic working characteristics have been taken with water at 15°C, at the atmospheric pressure of 1 bar and specific gravity is 1gr/cm³, ISO 9906 Annex A.